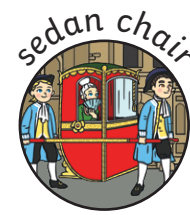


Key Facts	
<b>What was a longboat?</b>	Longboats were used by the Vikings to <b>travel</b> to other countries.
<b>What were sedan chairs?</b>	Sedan chairs were mainly used by wealthy people. The person would sit on a chair inside a cabin and would be carried by servants using poles.
<b>What was a horse and cart used for?</b>	Horses and carts were used by people to <b>travel</b> and <b>transport</b> goods to other places.
<b>What was a penny-farthing?</b>	The penny-farthing was a bicycle that had one large wheel at the front and one smaller wheel at the back.
<b>How did the steam locomotive change lives?</b>	The steam train changed the way people moved goods and <b>travelled</b> . Many city people, even the poorer workers, were able to <b>travel</b> to the seaside for the first time.
<b>Who invented the petrol car?</b>	Karl Benz invented the first <b>petrol engine</b> car.
<b>Who flew the first plane?</b>	The Wright Brothers were the first people to successfully fly in a plane.



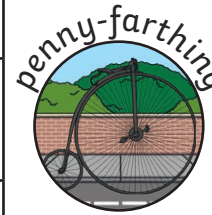
longboat



sedan chair



horse and cart



penny-farthing



steam train



electric train



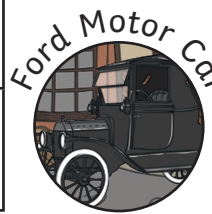
Wright Flyer



passenger plane



Benz Motor Car



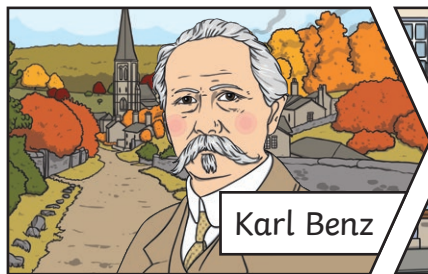
Ford Motor Car



petrol car



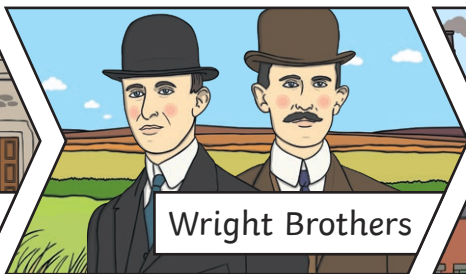
electric car



Karl Benz



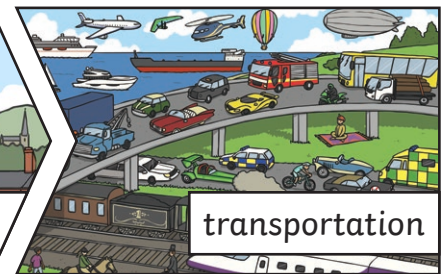
Henry Ford



Wright Brothers



George Stephenson



transportation

Key Vocabulary	
<b>travel</b>	Moving one from one place to another.
<b>transport</b>	Carrying people or goods from one place to another.
<b>steam engine</b>	A <b>steam engine</b> uses steam from boiling water to make it move. The steam pushes the moving parts.
<b>petrol/combustion engine</b>	<b>Combustion</b> means burning. A <b>petrol engine</b> burns petrol to make it move.
<b>electric cars</b>	<b>Electric cars</b> use electricity to make the motor turn.

